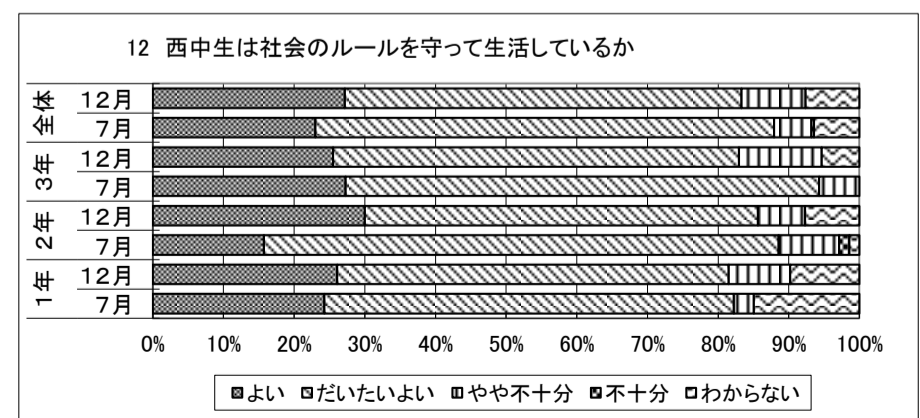
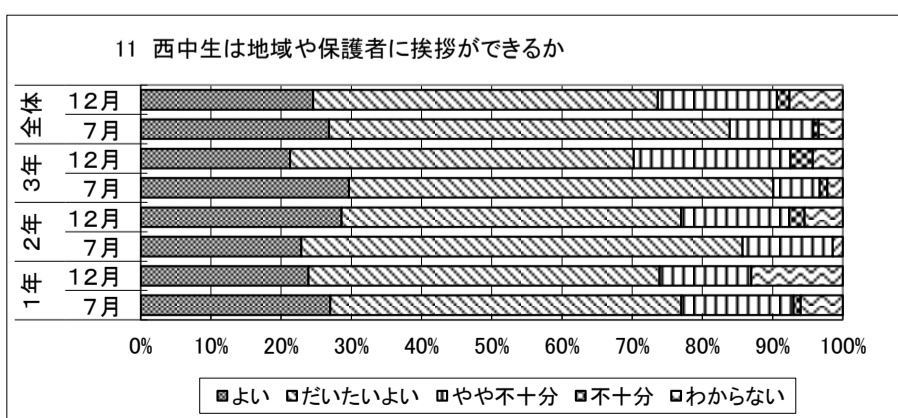
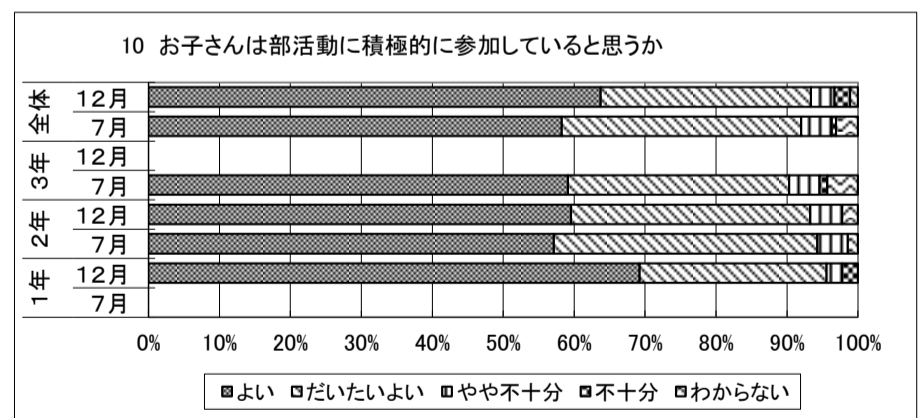
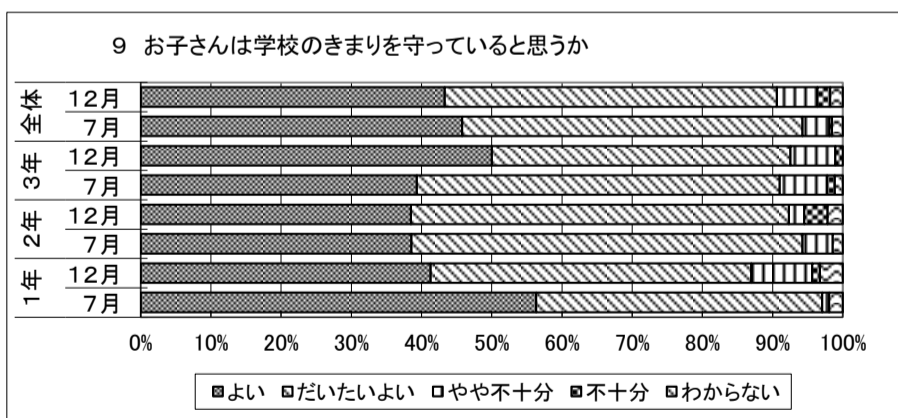
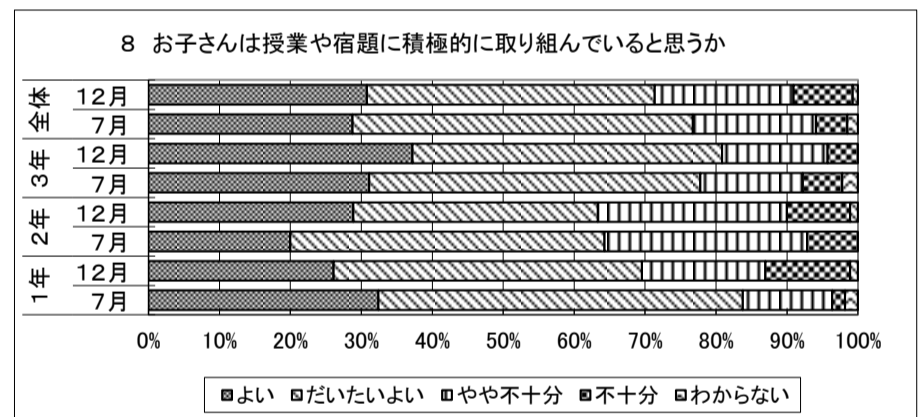
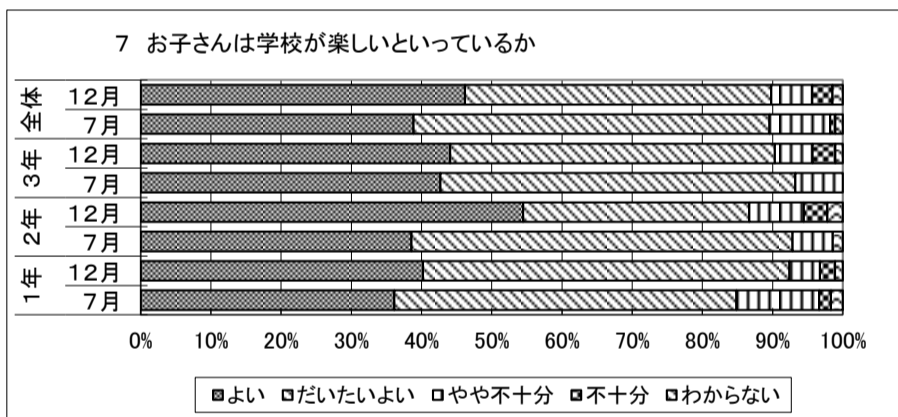
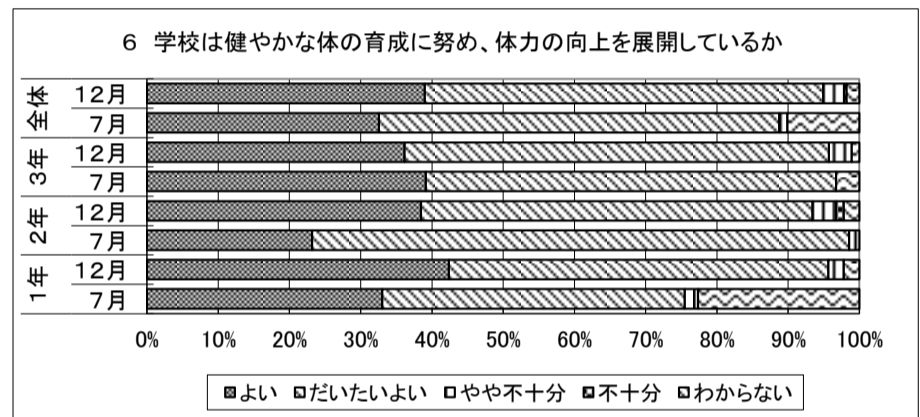
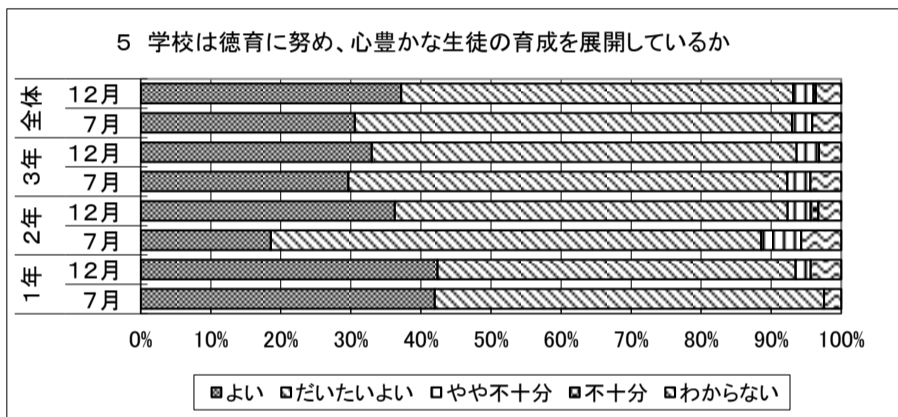
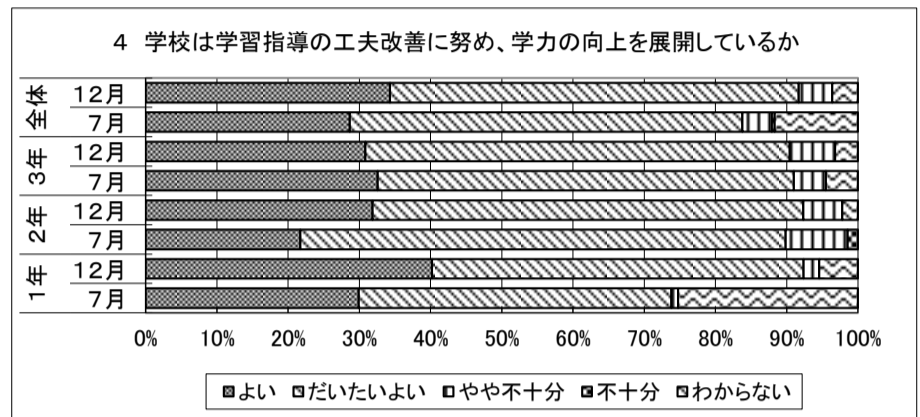
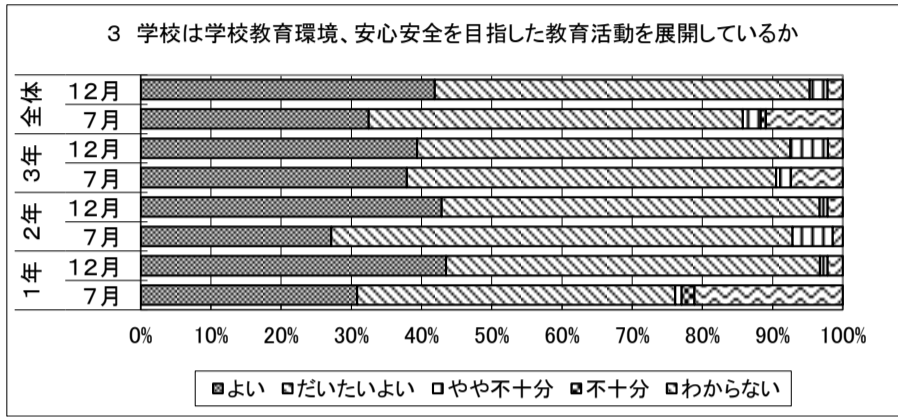
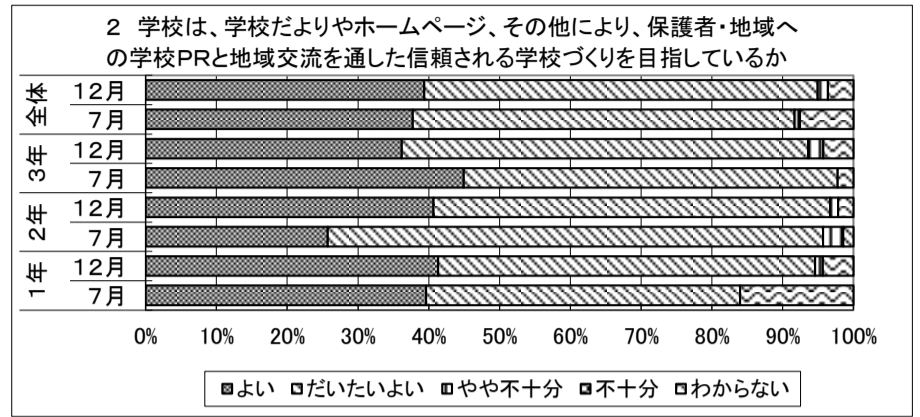
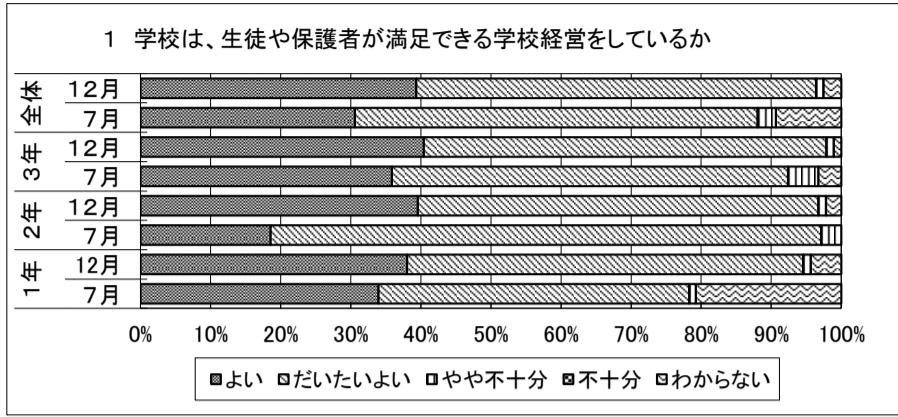
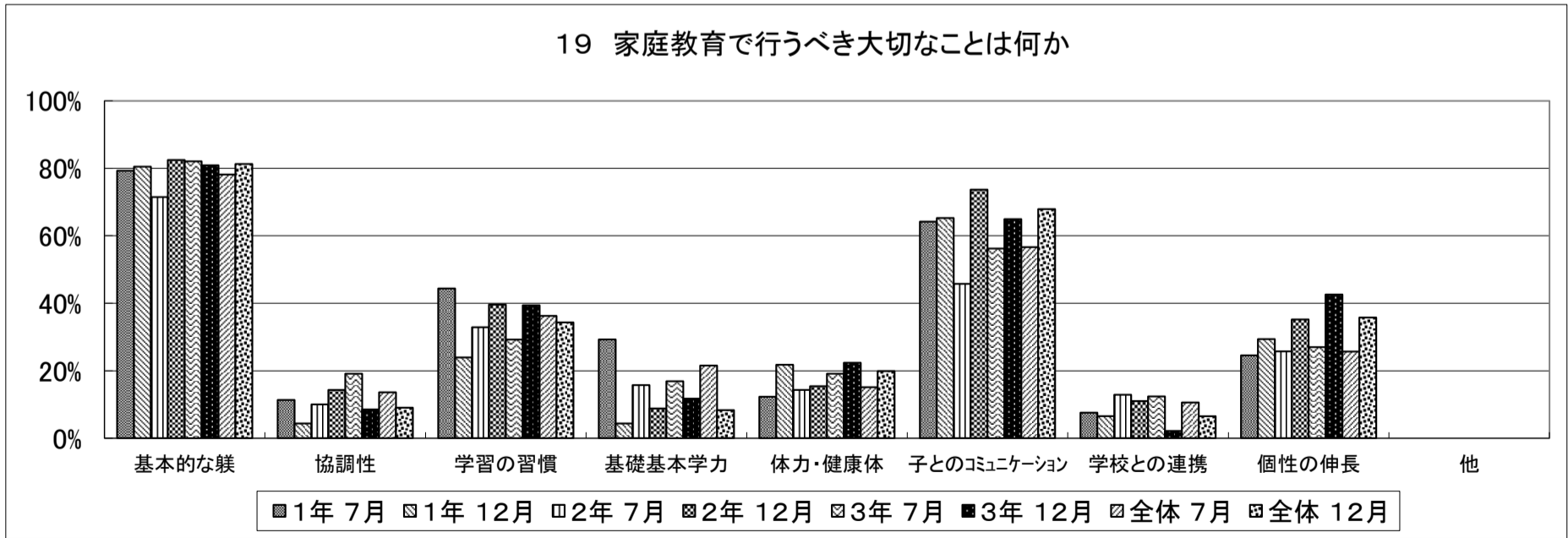
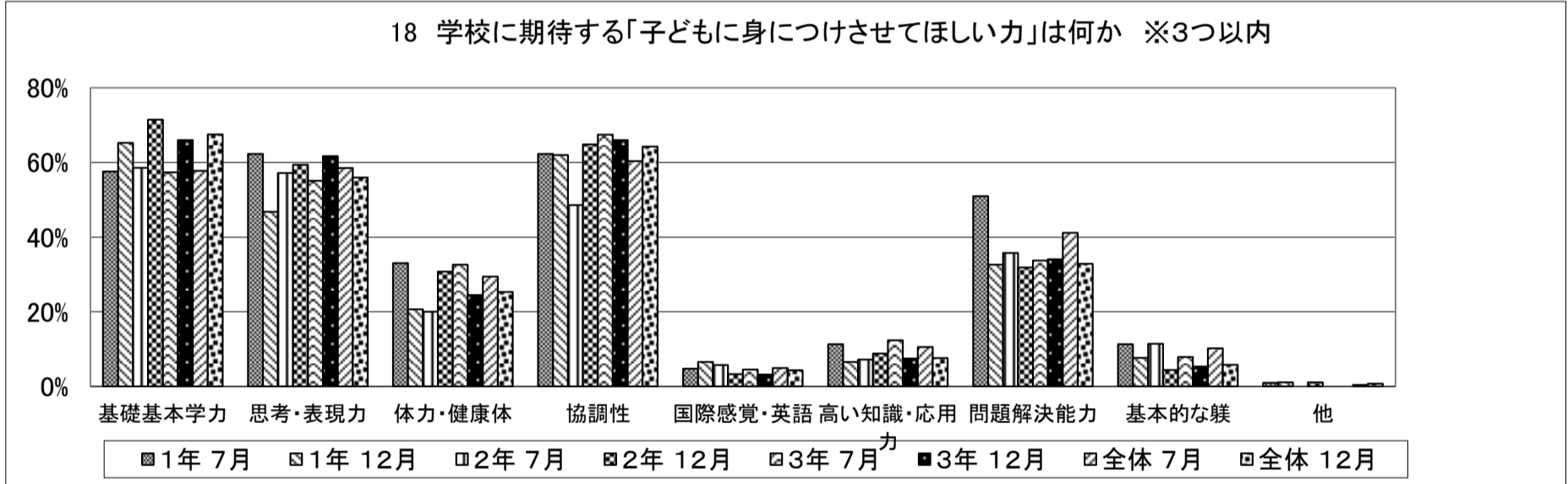
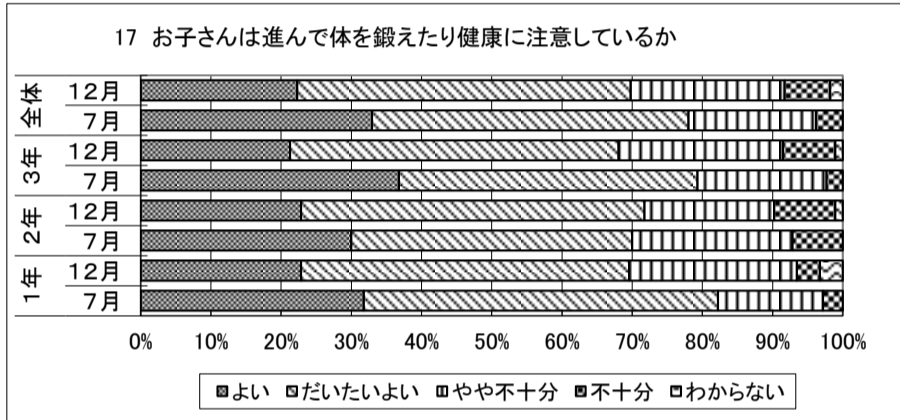
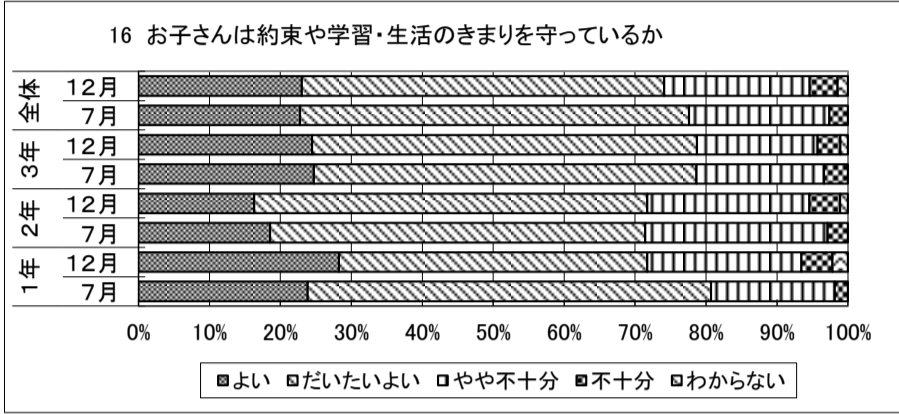
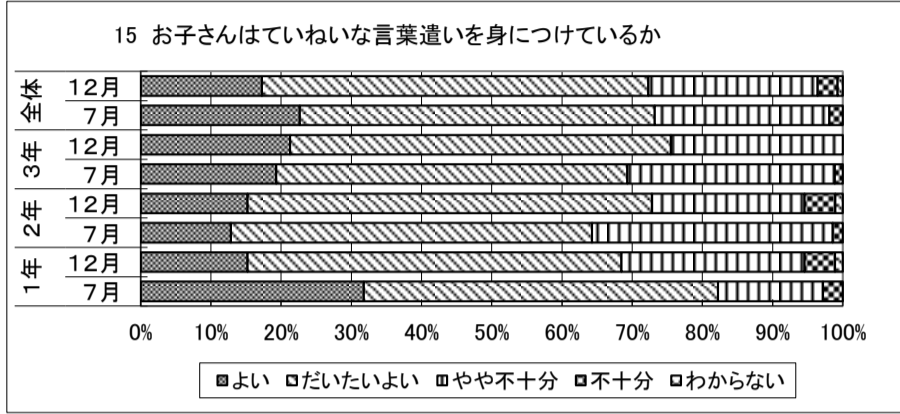
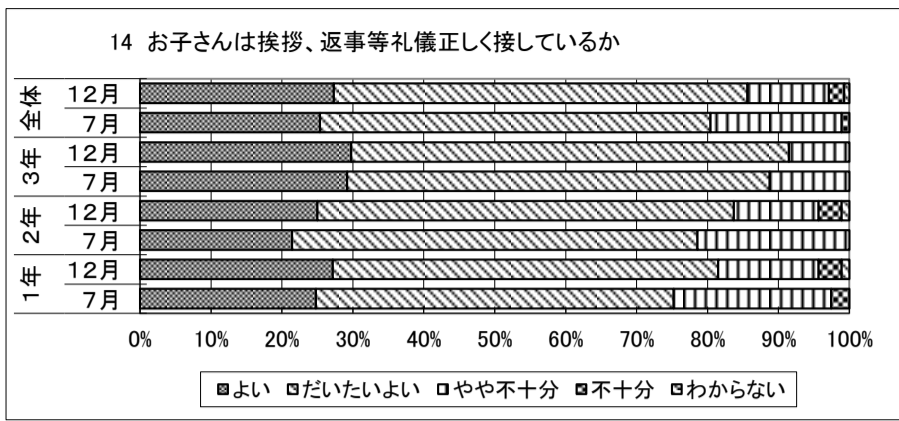
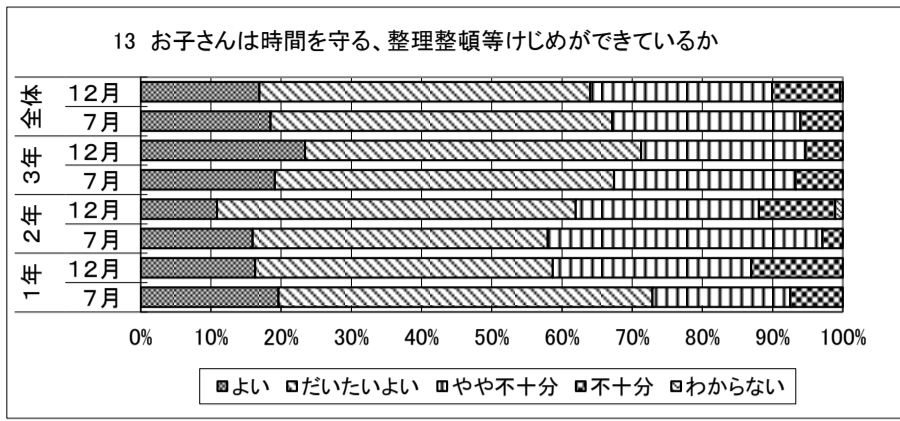


# 令和2年度 学校教育保護者アンケート調査結果(7月, 12月比較)





★記述式のご意見もいくつかいただきました。  
 いずれのご意見も、3学期に行われる学校評価(教員自らが行う「内部評価」や学校関係者が行う「学校関係者評価」)に反映させ、今後の学校経営を進める上での着眼点とさせていただきます。  
 引き続き、健全な子どもたちの育成のために、学校と家庭、地域社会が協力して子どもたちの教育に邁進していきますので、御理解・御協力を御願います。